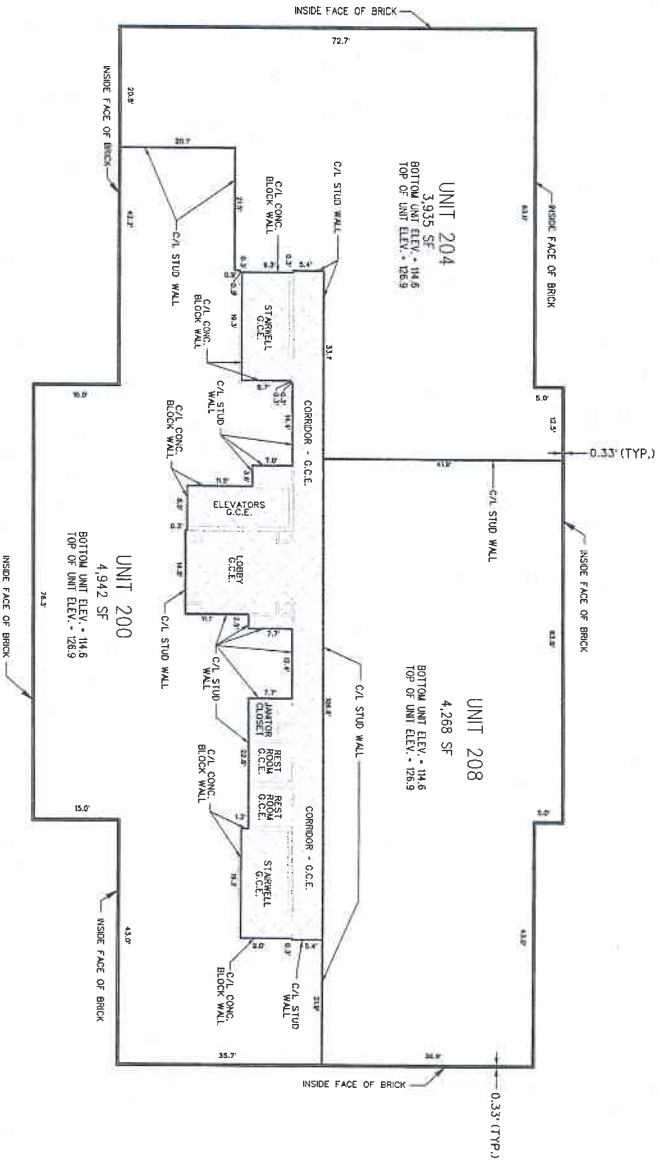






31-684

Final for record  
 JLE LDRS 31 RUDS 684  
 DATE 08.1.10  
 BY JLE  
 CHECK



**REASON FOR 2ND AMENDMENT**  
 REVISION TO THE ORIGINAL PLAN FOR UNIT 200. THE ORIGINAL PLAN FOR UNIT 200 WAS 4,942 SF. THE 2ND AMENDMENT CHANGES THE COMMON ELEMENTS AREA OF CORRIDOR, LOBBY, JANITOR CLOSET AND REVERSED CONFERENCE ROOM TO THE COMMON ELEMENTS.

NO.	DATE	DESCRIPTION	BY	CHKD.
1	02/19/10	ISSUED FOR PERMITS	JLE	
2	08/01/10	ISSUED FOR RECORD	JLE	

2ND AMENDED PLAN OF CONDOMINIUM SUBDIVISION  
 GENERALLY RECORDED IN CONDOMINIUM BOOK A/C 31 / 685-640  
 UNITS 200, 204, 208 AND LIMITED COMMON ELEMENTS  
 5213 WING SECOND FLOOR CONDOMINIUM  
 PORTION OF 162.71 AC. RESUBJECT CONVERTED TO  
 AND AVERAGE LLC BY DEED DATED 2/29/01 / 507  
 AND ELECTION DISTRICT - BURLINGAME COUNTY, OREGON AND

DATE: 08/03/10  
 SHEET: 3 OF 6  
 PROJECT: 31-684

**LEGEND**  
 G.C.E. GENERAL COMMON ELEMENT  
 S.F. SQUARE FEET  
 ELEV. ELEVATION







